

ALEPH1 CONTROLLERS

TOUCH INTERFACE CONTROLLERS FOR ALEPH1 LED LIGHTS
79350/79351/79352/79353/79354



79354



79352



79353



79350



79351

Features

- Touch-screen interface
- RGB and single colour strip dimming
- Up to 24 changing patterns or modes
- Auto sensing 12 to 24V DC
- Constant voltage PWM signal output
- Smooth dimming
- Power-loss memory recovery function

Introduction

The ALEPH1 interface touch controllers range is designed to control RGB and single colour LED luminaries featuring a unique touch interface technology with the function keys. User does not need to have even small pressure on the keys to create colour patterns.

This user oriented controller range can make automatic recognition of 12 or 24V DC and with PWM in-built MCU can perform smooth dimming for LED strips.

Safety

- Do not expose the units to rain or moisture
- Do not spill water or other liquids into or onto the equipment.
- Do not exceed the rated 12-24 DC power supply. Do not use home high voltage power supplies
- Never operate the equipment when it's cover is removed.
- This unit is intended for indoor use only, use of this product outdoors voids all warranties.

Functional Description

1. 79354



The **ALEPH1 RGB 8 BUTTONS TOUCH PANEL LED CONTROLLER** is designed to control RGB strips driving up to 6 Amps per channel. It has 16 pre-positioned changing patterns and 20 levels for brightness adjustments. Also supports 3 different remote wireless controls (sold separately) adding great flexibility.

1. POWER Power ON/OFF
2. PAUSE Freeze the status. Invalid under static mode
3. MODE+ Jumps to next colour pattern
4. MODE- Jumps to previous colour pattern
5. SPEED+ Increases speed. Invalid under static mode
6. SPEED- Decreases speed. Invalid under static mode
7. BRT+ Increases brightness. Invalid under static mode
8. BRT- Decreases brightness. Invalid under static mode

Accessories (sold separately):



79360

-Colour Pulley: Sliding a finger on it will allow a selection of 64 output colours + function keys.

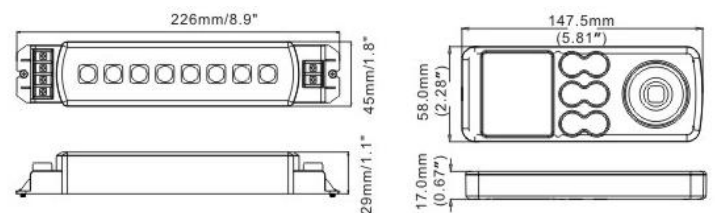


79361

-Capable to drive several controllers at the same time.

-8 available keys to provide remote functions to the controller.

Dimensions:



Screw Terminals:



2. 79353



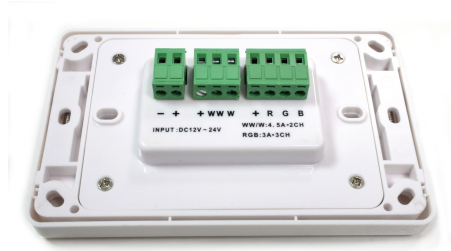
Colour Patterns:

- | | |
|----------------------|-------------------------|
| 1. Static Red | 9. Red Fades |
| 2. Static Green | 10. Green Fades |
| 3. Static Blue | 11. Blue Fades |
| 4. Static Yellow | 12. Yellow Fades |
| 5. Static Purple | 13. Purple Fades |
| 6. Static Cyan | 14. Cyan Fades |
| 7. Static White | 15. White Fades |
| 8. Quick Colour Glow | 16. Gradual Colour Glow |

The **ALEPH1 RGB+W+W COLOUR SQUARE TOUCH LED CONTROLLER AMERICAN STANDARD WALL TYPE** is designed to control RGB plus two kind of white colour LED strips (RGB+W+W) driving up to 3 Amps per each red, green or blue channel and up to 4.5 Amps per each white channel. It has 24 pre-positioned static and dynamic patterns and brightness of all 64 colours in RGB full colour touch surface ring can be adjusted.

Keyboard Function:

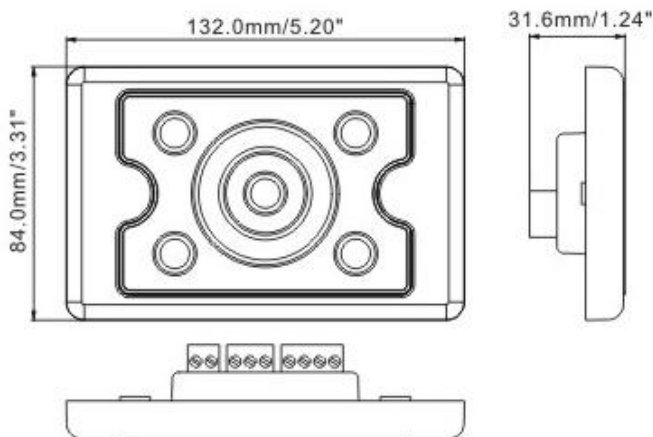
Back Panel:



Colour Patterns:

- | | |
|--|--|
| 1. Static Red | 13. Yellow Fades |
| 2. Static Green | 14. Purple Fades |
| 3. Static Blue | 15. Cyan Fades |
| 4. Static Yellow | 16. White Fades |
| 5. Static Purple | 17. RGB circling |
| 6. Static Cyan | 18. RGB, yellow, purple, cyan and white circling |
| 7. Static White | 19. RG glow |
| 8. RGB jump change | 20. RB glow |
| 9. RGB, yellow, purple, cyan and white jump change | 21. GB glow |
| 10. Red Fades | 22. RGB gradual glow |
| 11. Green Fades | 23. 7 colour gradual glow |
| 12. Blue Fades | 24. Demo: cycles patterns 9, 18, 22 and 23 |

Dimensions:

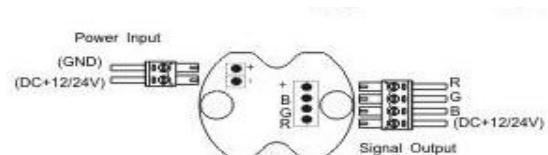


3. 79352



The **ALEPH1 RGB SQUARE WALLMOUNT TOUCH LED CONTROLLER** is designed to control RGB colour LED strips driving up to 3 Amps per each red, green or blue channel. It has 16 pre-positioned static and dynamic patterns and brightness of all 64 colours in RGB full colour touch surface ring can be adjusted.

Screw Terminals:



Colour Patterns:

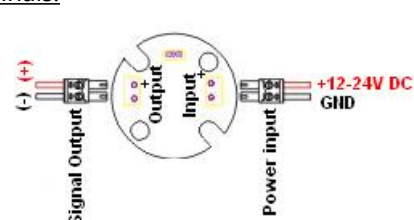
- | | |
|----------------------|----------------------|
| 1. Static Red | 9. Seven colour glow |
| 2. Static Green | 10. Red Fades |
| 3. Static Blue | 11. Green Fades |
| 4. Static Yellow | 12. Blue Fades |
| 5. Static Purple | 13. Yellow Fades |
| 6. Static Cyan | 14. Purple Fades |
| 7. Static White | 15. Cyan Fades |
| 8. Seven colour jump | 16. White Fades |

4. 79350



The **ALEPH1 SINGLE COLOUR SQUARE WALLMOUNT TOUCH LED CONTROLLER** is designed to control monochrome LED strips driving up to 8 Amps. Its touch-ring allows 256 levels of brightness adjustment and the plus and minus buttons have a long press functionality for constantly adjusting brightness. 2 handy shortcut buttons allow easy access to 20 and 100% brightness levels.

Screw Terminals:

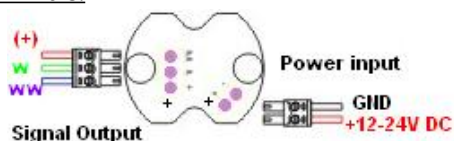


5. 79351

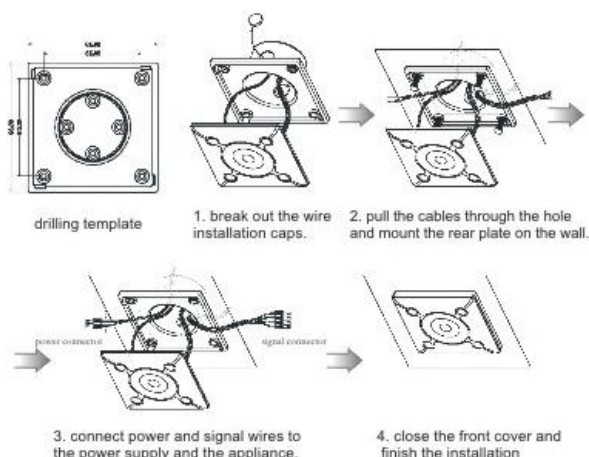
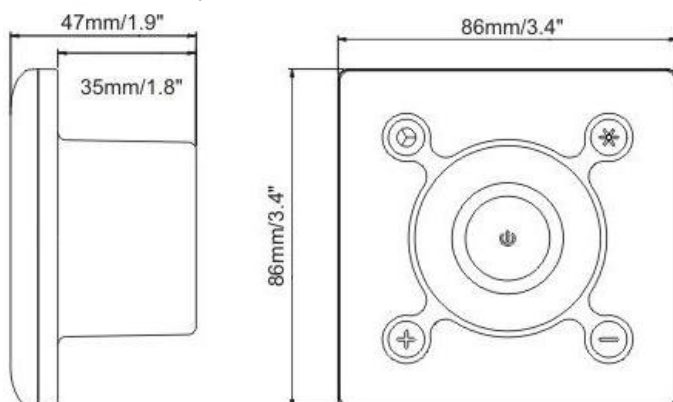


The **ALEPH1 WARM WHITE + COOL WHITE (CTA) SQUARE WALLMOUNT TOUCH LED CONTROLLER** is designed to control white and warm white (CTA) LED strips driving up to 4 Amps per channel. Its touch-ring allows 256 levels of white temperature adjustment by dimming both cool and warm white luminaries along the range. Plus and minus buttons have a long press functionality for constantly adjusting colour output and 2 handy shortcut buttons allow easy access to the coolest and warmest setting levels.

Screw Terminals:



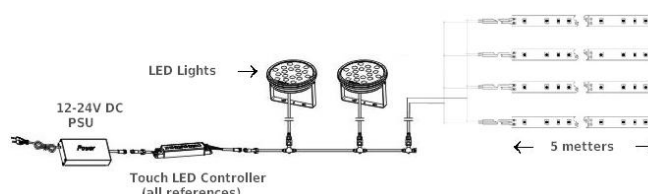
Dimensions (all square models):



Touch Keyboard Functions (all wallmount models):

- Button Touch to turn the power ON and OFF
- Button Touch to activate the brightness mode (only available with static colour patterns)
- Button Touch once to activate pattern selection
Touch again to activate speed selection (button flashes in speed selection mode)
- Button Previous pattern (in pattern selection mode)
Decrease speed (in speed selection mode)
Decrease brightness (in brightness mode)
- Button Previous pattern (in pattern selection mode)
Decrease speed (in speed selection mode)
Decrease brightness (in brightness mode)
- Button Shortcut buttons allow pre defined settings

Wiring diagram



Specifications

	79350 (EU)	79351(EU)	79352 (EU)	79353 (US)	79354
Rated Voltage	12/24V DC				
Output Max. Current	8A*1CH	4A*2CH	3A*3CH	3A*3 RGB 4.5A*2White	6A*3CH
Output Max. Power	96W (12V) 192W (24V)	96W (12V) 192W (24V)	108W (12V) 216W (24V)	216W (12V) 432W (24V)	215W (12V) 423W (24V)
Output Type	Common Anode				
Channels	1	2	3 RGB ch		3 RGB ch
Weight (g)	105	105	105	165	126
Weight (lbs)	0.23	0.23	0.23	0.36	0.27
Patterns			16	24	16
Bright levels	256	256	64	64	20

Ordering Information

ENTTEC PTY LTD
17/5 Samantha Court
Knoxfield Victoria 3180
Australia
Tel: +61 3 9763 5755
Fax: +61 3 9763 5688

ENTTEC AMERICAS
604A Cornerstone Ct.
Hillsborough NC 27278
USA
Tel-Fax: (888) 454-5922
email sales@enttec.com